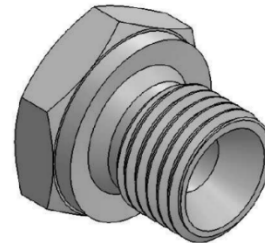
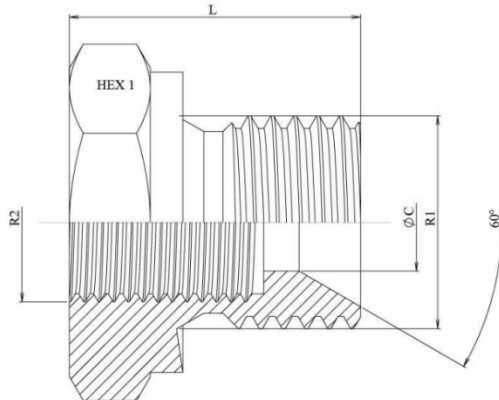


## DATA SHEET - TEHNIČNI LIST



	R1	R2	HEX 1	ØC	L	⚖️ (Kg)
<b>82660</b>	1/4" BSP	1/8" BSP	19	6	18	0,016
	3/8" BSP		22	8	21	0,033
<b>80316</b>	1/2" BSP	1/4" BSP				0,028
<b>82661</b>	1/2" BSP	3/8" BSP	27	11	24	0,057
<b>80315</b>						
<b>82662</b>	3/4" BSP	1/2" BSP	32	15,4	25,5	0,086
<b>80317</b>				16	26,5	0,066
<b>82663</b>	1" BSP	3/4" BSP	41	22	30	0,155
<b>80544</b>					31,5	0,140
<b>82664</b>	1"1/4 BSP	1" BSP	50	28,5	35	0,265
<b>82665</b>					33	0,195
<b>82666</b>	1"1/2 BSP	1"1/4 BSP	55	31	37	0,175
<b>82667</b>				33,3	38	0,215
<b>82660</b>	2" BSP	1"1/4 BSP	70	46	41	0,492
		1"1/2 BSP				0,525

Izdelano iz Ogjikovega Jekla

Made of Carbon Steel

